

HI-GUARD

(Single Component Ready to Use Flexible Waterproofing Membrane)

DESCRIPTION

HI-GUARD is a ready to use single component liquid; rubber polymer disperser which dries to form a thin, seamless, load bearing elastomeric waterproof membrane. It is fast drying, breathable, produces a continuous moisture barrier with outstanding adhesion. Easily applied with Brush, Roller, Trowel or Sprayer.

USES

HI GUARD is used to waterproof:

- Interior and Exterior.
- Walls
- Balconies and Terraces.
- Asbestos roofing.
- Wet rooms such as Shower areas and Shower pans, Bathrooms, Kitchens and Sanitary areas in commercial buildings and Residential Homes.
- Drains
- Swimming pools, Foundations and water features.
- External coating of walls in Basements, sumps, Subways and Lift wells.
- Fast track jobs where time is of essence and areas not requiring intricate waterproofing details.

ADVANTAGES

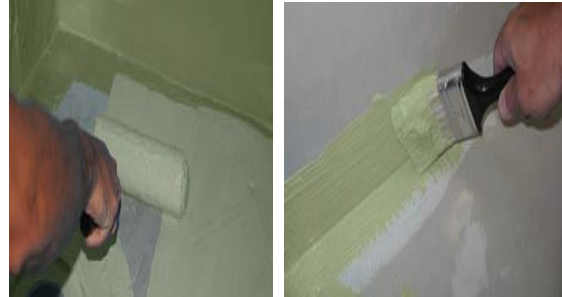
- Convenient – Ready to use, can be easily applied by Brush, Roller Or spray.
- Protects substrates from damage by water penetration.
- Tough, Durable, Long term protection.
- Elastomeric – Isolates cracks up to 1/8" (3mm).
- Inhibits the growth of mold & mildew.
- Good Weather resistance and offers excellent resistance to UV degradation.
- Breathable.
- Solvent free- Environmentally friendly.
- Fast Setting.
- Safe-Non flammable.
- Ease of Maintenance.
- Install tile, brick and stone directly onto membrane.

PACKING

HI GUARD is packed in 5kg, 10kg and 20kg Plastic Containers.

COVERAGE

Approximately 40 Sq. Ft.s / Kg./ coat on reasonably smooth masonry surfaces.



Technical Data

Color	: Green
Form	: R.F.U
Specific Gravity	: 1.30-1.35
Appln Temp	: >5° C
Service Temp	: 20°C - 55°C
Foot Traffic	: 6 hrs @20 °C & 4 hrs @40 °C
Crack test(1/16",Cycled 10 times/24 hrs.)	: No loss of Bond or Cracking. ASTM C-836-95
Solid Content	: 65%
Accelerated Weathering	: UV Resistant

APPLICATION

Surface Preparation: The surface must be clean, sound, dry and free from oil, grease, laitance and any loose particles to ensure good Adhesion. Surface should be scarified, level and all defects repaired. Concrete and Cementitious substrates should be at least 21 days old.

LIMITATIONS

Do not apply HI-GUARD at temperatures below 5°C or to be a frozen substrate.

Do not use as an adhesive to install ceramic tile or natural stone.

Not a sealer for Saw-cut, Control, Construction, cold or Expansion Joints.

STORAGE & SHELF LIFE

Shelf life in unopened, undamaged packaging is approx. 6 months. Store in a dry, frost-free place.

Priming: Where necessary to seal of dust and cohesiveness to improve the substrate, Apply HI-PRIME as a Primer.

Corners, Horizontal and Vertical Joints: Install HI-TAPE JS into all corners exposed to possible water loads.

Apply HI-GUARD on the properly prepared surface, by using a Roller or Brush. The application should be similar to painting – in one direction. Allow this first coat to dry for about 4-6 hours. Apply second coat of the slurry in the direction of right angles of the first coat.

Tiling can commence after 6 hours by using Hi-Tile Liquid Tile Adhesive. Clean tools and equipment's with water immediately after use. Cured material can only be removed mechanically.

**This Product is Formulated and Labeled and Commercial use only
For Best Results and Safest Usage, User is Specialty Directed to Consult.**

Product Warranty: All recommendations, statements and technical data contained herein are based on tests we believe to be reliable and correct. HIBOND warrants its products to be free of mfg. Defects and that, at the time and place of shipment, our material will meet current published physical properties when applied within HIBOND'S directions and tested in HIBOND'S standards. HIBOND'S facility is limited to replacement of material found to be defective. As HIBOND has no control over the use to which others may put its products. It is recommended that the product be tested to determine if suitable for a specific application and / or our information is valid in particular circumstance. Responsibility remains with the architect or engineer, contractor and owner for the design, applications and proper installation of each product. Nothing contained herein shall be construed to be a recommendation to use or as a license to operate under or to infringe any existing patents.